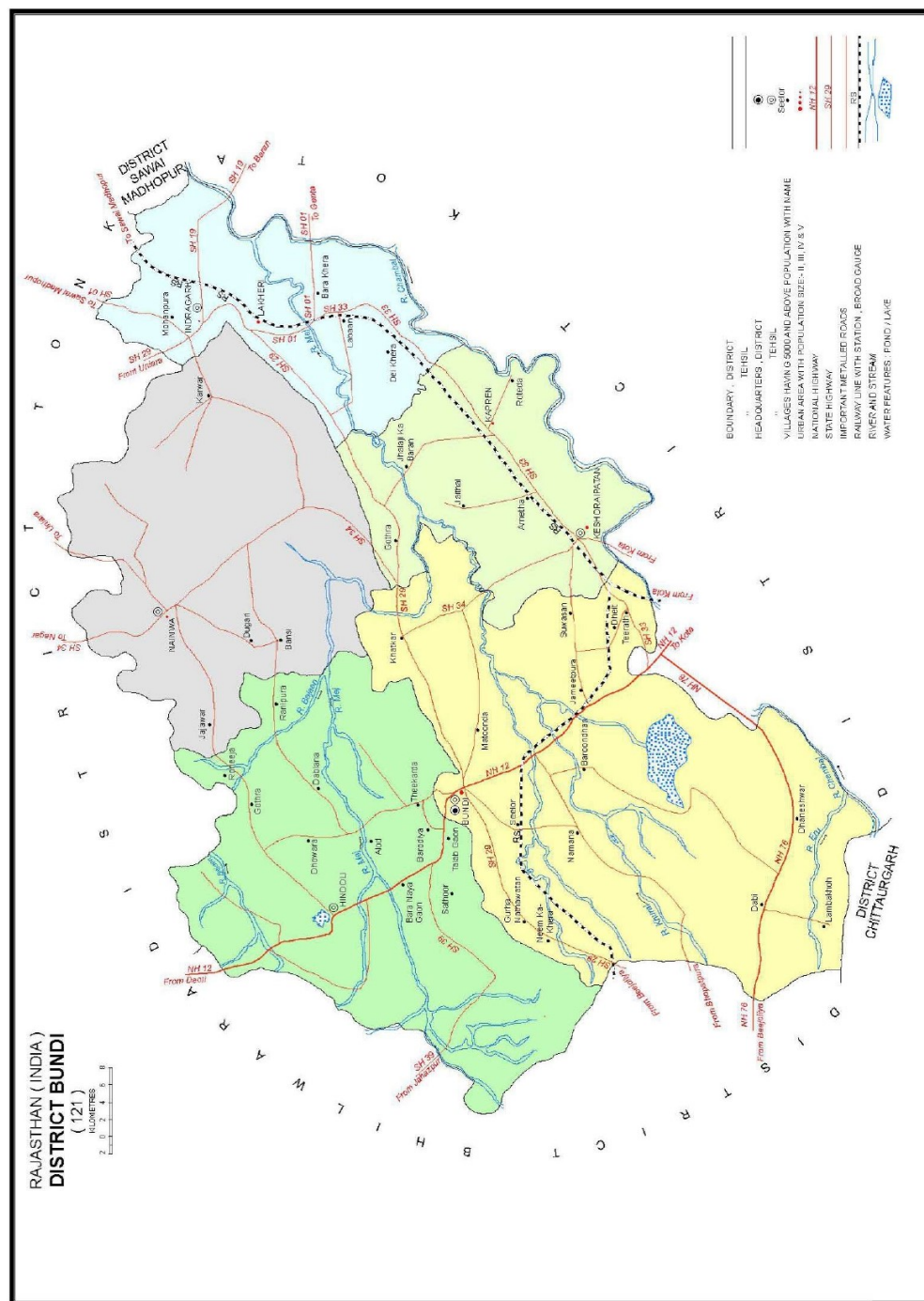


DISTRICT - BUNDI



Source: District Census Handbook 2011, Part XII-A, Bundi, Rajasthan

Introduction

Bundi is situated in north western region of the state, between 24°59' and 25°53' north latitudes and between 75°91' and 76°19' east longitudes. It is bounded in the north by Tonk district, in the west by Bhilwara district, in the south by Chittaurgarh district and in the south-east by Kota district. The river Chambal forms the south-eastern boundaries and separates Bundi from Kota. The central Bundi range passes through the centre of Bundi and divides it into two equal halves viz. north-western and south-eastern parts.

In ancient times, the area around Bundi was inhabited by various local tribes majority group belonging to Meena. Bundi is said to derive its name from a former Meena tribe chief called Bunda Meena. Bundi was previously called “Bunda-Ka-Nal”, Nal meaning “narrow ways”. Later the region was acquired by Rao Deva Hada, who took over Bundi from Jaita Meena in 1342, and established a princely state Bundi, renaming the surrounding area called Hadoti, the land of great Hada Rajputs.

According to the Census of 2011, the district of Bundi has a population of 1,110,906 out of which 577,160 are males and 533,746 are females. It accounts for 1.62 percent of the State population. The Geographical area of the district is 5,776 sq km which is 1.68 percent of the total state area. The district ranks 30th in terms of population and 22nd in terms of area and 22nd in terms of population density among all districts of the state.

Physiographically, Bundi district is irregular rhombus shaped, traversed throughout its whole length from south-west to north-east by a double line of hills constituting the central Bundi range, which divides it in about two equal portions. For many miles the precipitous scarp on southern face of this range forms an almost impassable barrier between the plain country on either side. The main rivers crossing the district are Chambal and Mez. Smaller rivers include Mangli, Eais, Talera and Ghora Pachar.¹

Part A – Resource Mapping

Physical Resources

- **Minerals²**

The rocks of the district belong mainly to the Aravalli and Vindhyan Super Groups, which are separated by the Great Boundary Fault of Rajasthan. Geologically the rocks belong to metamorphic series of Archaean rocks and consist of gneiss, schists, histita quartzite and limestone with fragment bindings of marble and granite. The northern plain is occupied by slates, phyllites, intercalated with quarzitic and dolomitic marble. In the Bundi area, rocks of Kalmur, Rewa and Bhander groups comprising sandstone, shales and limestones are also found.

Table - Production of Major Minerals (2010-11)

S. No.	Mineral	Area (in hectares)	Production (in tons)
1.	Limestone	3980.00	802917.49
2.	China Clay	65.500	8694
3.	Silica Sand	125.00	99235
	Total	4170.500	910846.49

Table - Production of Minor Minerals (2010-11)

S. No.	Mineral	Area (in hectares)	Production (in tons)
1.	Fuller'sEarth	-	1350
2.	Kankar-Bajri	-	137702
3.	Limestone(Burning)	46.656	301973
4.	Marble	36.079	5700

5.	Masonry Stone	91.685	839533
6.	Mitti	-	53266
7.	Murram	-	3073
8.	Sandstone	2005.747	2439435
9.	State Stone	3.000	375
	Total	2183.167	3782407

- **Agriculture³**

Bundidistrict lies in the Humid south Eastern Plains Agro-Climatic Zone, according to the classification by Department of Agriculture, Government of Rajasthan. Soils in this zone are black soils of alluvial origin, clay loan, groundwater salinity. Commonly grown crops in this zone in kharif season are sorghum and Soyabean and in rabi season are wheat, and mustard.

In 2018-19, total sown area was 521951 hectares, of which 246369 ha was sown in the Rabi season and 275582 ha was sown in Kharif season.⁴

Table – Crop Statistics (2018-19)⁵

Crops	Area (ha)	Production (MT)	Yield (kg / ha)
Soyabean	27245	31254	1147
Wheat	147557	658540	4463
Rice	50218	125013	2489
Maize	23759	111752	4704
Mustard	59073	96594	1635
Gram	24572	35361	1439
Urad	139511	31957	229

- **Forests⁶**

Out of the total 5,776 sq km of area in Ajmer district, only 557.18 is under forest cover. As per the classification by Forest Survey of India, there is 1.00 area under very dense forest category, 137.93 under moderately dense forest category and the remaining 418.25 under open forest category.

The hills in the Bundi district are covered with shrub forest mostly consisting of Dhak, Kjptra, Khari, Mahua, Khirana, Churail and Tendu, However the hills and flat ridges do not support good forest growth. During the dry season, the country sides give a bare and desolate look. The Bundi jungles, in the old days were famous for their big games. Now however their population has drastically reduced. Panthers, wild boars, Chinkara, Nilgai, Sambhar and Chital are still found in fair numbers. Be sides, the common Indian birds found everywhere, the area has painted partridges, bush quail and grew jungle fowl.⁷

Industries

Industries in the district are enlisted.

Table – Large scale Industries⁸

S. No.	Name of Industry	Products	Fixed Investment (Rs. In Crore)	Employment
1.	Advantage Oil Mills P.O. Ramganj Balaji, Bundi	De-oiled Cake, Crude Oils Refined Oil Vanaspathi & Tin Manufacturing and Chillex Plant	33.98	109
2.	ACC Ltd. Lakheri, Cement Works	Cement & clinker	372.00	372
3.	Adani Wilmar Ltd	1. Soya Crude, Refined Veg. Oil and De Oiled Cake 2. Mustard Kucchi Ghani, Expeller Oil And De oiled Cake	141.77	71

4.	Ruchi Soya Industries Ltd	Refined Oil & Tin Mfg		
5.	Shri Shankar Gauri Agro Product pvtltd	BasmatiRice PohaRice Brown	8.18	62
6.	Paramount Rice Pvt. Ltd.	RiceRice Brown Bhussi	9.46	31

Infrastructure⁹

Economic Infrastructure

- **Transport and Communication**

All the important places in the district are connected by roads. Bundi district had 175 post offices, 41 Telephone exchanges, 5052 Telephone connections during the year 2017-18.

- **Electricity**

In Bundi district, there is only one Hydroelectrical power station at Jawahar Sagar Dam, Bundi. There is only one captive power plant exist in ACC Lakheri. The number of consumer in the year 1984-85 was 29377 which increased to 229906 in 2017-2018. The connected load of electricity is 437756 KWH in 2017-2018. The table below gives the distribution of consumer and connected load pattern for different categories.

Table – Energy Consumption (As On 2010-11)

S. No.	Type of Consumption	No. of Consumed
1.	Domestic Consumption	180272
2.	Commercial Consumption	16235
3.	Industrial Consumption	2958
4.	Public Lighting	238
5.	Public Water Works	688
6.	Agriculture Consumption	28569
7.	Other Consumption	946
	Total	229906

Social Infrastructure

- **Education**

As per the Annual Reports 2019-20 of Department of Elementary Education, Department of Secondary Education, and Department of Higher Education, Government of Rajasthan, following are the number of schools in the district.

Category	Public	Private	Total
Primary	590	79	669
Upper Primary	358	342	700
Secondary	56	112	168
Senior Secondary	204	92	296
Total	1208	625	1833

As per the Annual Report 2019-20 of Department of Higher Education, Government of Rajasthan, following are the number of colleges in the district.

Public	Private	Aided	Total
3	7	1	11

- **Health**

According to the Annual Report 2019-20 of Department of Health, Government of Rajasthan, following are the medical facilities available in the district.

Hospital	Dispensary	Community Health Centres	Maternal and Child Welfare Centres	Primary Health Centres		Sub-Health Centres	Total
				Rural	Urban		
2	2	13	3	29	1	215	265

Tourist Attractions¹⁰

Religious Sites

Apart from these, there are a total of 2356 temples in the district that fall under variously classified categories of the Devsthaan Department, Government of Rajasthan. Following are the details of some of them.

Temples in “*Rajkiya Pratyaksh prabhar*” Category

S. No.	Temple Name	Block	Deity
1.	Shri Ranganath Ji	Bundi	Vishnu ji
2.	Shri Shri Anand Dhan Ji	Bundi	
3.	ShirAkhada Ji	Bundi	
4.	Shri Charbhuj Ji	Bundi	Vishnu Ji
5.	Post Office ke Pass	Bundi	
6.	Shri Gopal Lal Ji	Bundi	Krishna Ji
7.	Shri Santoor Mata ji	Bundi	Mata Ji
8.	Shri Ranganath Ji	Bundi	Vishnu Ji
9.	Shri Keshavarai Ji	Bundi	Vishnu Ji

Temples in “*Rajkiya Atmanirbhar*” Category

S. No.	Temple Name	Block	Deity
1.	Shri Pitambar Rai ji	Bundi	Vishnu Ji
2.	Shri Govindnath Ji	Bundi	Krishna Ji
3.	Shri Hanuman Ji	Bundi	Hanuman Ji
4.	Shri Ranganath Ji	Bundi	Krishna Ji
5.	Shri Gokul Chandrma Ji	Bundi	Krishna Ji
6.	Shri Radha Damodar Ji	Keshavarapan	Krishna Ji

Temples in “*Rajkiya Supurdgi*” Category

S. No.	Temple Name	Block	Deity
1.	Shri Vijayan Mata ji	Bundi	Mata Ji

Temples in “*Rajkiya Sahayata Prapt*” Category

S. No.	Temple Name	Block
1.	Shri Ganesh Ji Custom	
2.	Shri Ganesh Ji	
3.	Shri Laxminath Ji	
4.	Shri Madhu Bihari Ji	
5.	Shri Radha Damodar Ji	
6.	Shri Laxminath Ji	
7.	Shri Hanuman Ji	
8.	Shri Kheda Devjari Mata Ji	
9.	Shri Mordin Dev Ji	
10.	Shri Kala Gora Ji	
11.	Shri Hanuman Ji	
12.	Shri Mahadev Ji	
13.	Shri Hanuman Ji	
14.	Shri Ganesh Ji	
15.	Shri Pitambar Ji	
16.	Shri Kedareshwar Ji Mahadev Ji	
17.	Shri Chawand Mata Ji	
18.	Shri Baijnath Ji Mahadev Ji	
19.	Shri Hansdev Ji Mata Ji	
20.	Shri Meer Sahab Ji	
21.	Shri Rao Bhavarsingh Ji	
22.	Shri Chouth Mata Ji	
23.	Shri Thakur Ji Diwali Poshakh	
24.	Shri Jagdish Ji	
25.	Shri Thakur Ji	
26.	Shri Sthanwada Lambi	
27.	Shri Rangnath Ji	
28.	Shri Gopal Ji	
29.	Shri Kedarnath Ji	

S. No.	Temple Name	Block
	Mahadev Jot	
30.	Shri Hanuman Ji	
31.	Shri Pitambar Ji Chandan	
32.	Shri Ganesh Ji Kot Ka	
33.	Shri Teja Ji	
34.	Shri Navratri Ji Poshakh	
35.	Shri Laxminath Ji	
36.	Shri Gopal Ji	
37.	Shri Hanuman Ji	
38.	Shri Kesho Ji	
39.	Shri Baba Ji ka Sthan	
40.	Shri Sanan Math	
41.	Shri Laxminath Ji	
42.	Shri Rangnath Ji	
43.	Shri Shree Ji	
44.	Shri Mahadev Ji	
45.	Shri Thakur Ji	
46.	Shri Madan Mohan Ji	
47.	Shri Ganesh Ji	
48.	Shri Pancheshwar Ji	
49.	Shri Girdhar Ji	
50.	Shri Lal Bihari Ji	
51.	Shri Murlidhar Ji	
52.	Shri Mahadev Ji	
53.	Shri Kalyan Rai Ji	
54.	Shri Charbhuj Ji	
55.	Shri Dedupanath Ji	
56.	Shri Kankali Mata Ji	
57.	Shri Mahore Devsthan	
58.	Shri Shree Ji	
59.	Shri Shree Ji	
60.	Shri Laxminath Ji	

S. No.	Temple Name	Block
61.	Shri Neemeshwar Ji	
62.	Shri Shree Ji	
63.	Shri Kuchi Guda Nathavato Ka	
64.	Shri Kuchi Guda Nathavato Ka	
65.	Shri Kuchi Guda Nathavato Ka	
66.	Shri Kuchi Guda Nathavato Ka	
67.	Shri Bada Raghunath Ji	
68.	Shri Laxminath Ji	
69.	Shri Bala Ji	
70.	Shri Ganesh Ji Guda	
71.	Shri Shyam Ji	
72.	Shri Katha Ji	
73.	Shri Bada Gopal Ji	
74.	Shri Chota Raghunath Ji	
75.	Shri Charbhuj Ji	
76.	Shri Dayal Ji	
77.	Shri Kabutara Javar	
78.	Shri Katha Ji	
79.	Shri Khel Bhariya Ji	
80.	Shri Laxminath Ji	
81.	Shri Jan Rai Ji	
82.	Shri Ganesh Ji	
83.	Shri Pujan Panchang	
84.	Shri Jain Mandir	
85.	Shri Seva Pujan	
86.	Shri Meera Sahab	
87.	Shri Jagan ki	
88.	Shri Lal Bihari Ji	
89.	Shri Datoda Gopal Ji	

S. No.	Temple Name	Block
90.	Shri Jain Mandir	
91.	Shri Gopal Ji	
92.	Shri Kalyan Rai Ji	
93.	Shri Ram Laxman Ji	
94.	Shri Joju Ji	
95.	Shri Charbhuj Ji	
96.	Shri Sawal Ji	
97.	Shri Laxmi Narayan Ji	
98.	Shri Narsingh Ji	
99.	Shri Keshu Ji	
100.	Shri Raghunath Ji	
101.	Shri Bhuteshwar Ji	
102.	Shri Bala Ji	
103.	Shri Mahadev Ji	
104.	Shri Devjar Mahadev Ji	
105.	Shri Devjar Mahadev Ji	
106.	Shri Sindh Keshar Mahadev Ji	
107.	Shri Laxminath Ji	
108.	Shri Charbhuj Ji	
109.	Shri Jan Rai Ji	
110.	Shri Narsingh Ji	
111.	Shri Charbhuj Ji	
112.	Shri Mahadev Ji	
113.	Shri Bala Ji	
114.	Shri Maldev Ji	
115.	Shri Ganesh Ji	
116.	Shri Dev Ji	
117.	Shri Kalka Bheru Ji	
118.	Shri Ganesh Ji	
119.	Shri Gora Ji	
120.	Shri Khelbhari Ji	
121.	Shri Rangnath Ji	
122.	Shri Charbhuj Ji	
123.	Shri Laxminath Ji	

S. No.	Temple Name	Block
124.	Shri Batukeshwar Ji Mahadev	
125.	Shri Laxminath Ji	
126.	Shri Chaturbhuj Ji	
127.	Shri Badri Narayan Ji	
128.	Shri Ganesh Ji	
129.	Shri Thakur Ji	Taleda
130.	Shri Thakur Ji	Taleda
131.	Shri Thakur Ji	Taleda
132.	Shri Shree Ji	Taleda
133.	Shri Ganesh Ji	Taleda
134.	Shri Mohan Lal Ji	Taleda
135.	Shri Samay Utsav	Taleda
136.	Shri Shree Ji	Taleda
137.	Shri Shree Ji	Taleda
138.	Shri Charbhuj Ji	Taleda
139.	Shri Kalyan Ji	Taleda
140.	Shri Shree Ji	Taleda
141.	Shri Vyas Ji	Taleda
142.	Shri Shree Ji	Taleda
143.	Shri Thakur Ji	Taleda
144.	Shri Shree Ji	Taleda
145.	Shri Gora Ji	Taleda
146.	Shri Charbhuj Ji	Taleda
147.	Shri Shree Ji	Taleda
148.	Shri Shree Ji	Taleda
149.	Shri Charbhuj Ji	Taleda
150.	Shri Charbhuj Ji	Taleda
151.	Shri Chota Gopal Ji	Taleda
152.	Shri Chota Gopal Ji	Taleda
153.	Shri Shree Ji	Taleda
154.	Shri Charbhuj Ji	Taleda
155.	Shri Bhagwat Ji	Taleda
156.	Shri Ganesh Ji	Taleda
157.	Shri Kheda Devta	Taleda
158.	Shri Ghas Bheru Ji	Taleda
159.	Shri Dasherji Pujan	Taleda

S. No.	Temple Name	Block
160.	Shri Dev Narayan Ji	Taleda
161.	Shri Holi Pujan	Taleda
162.	Shri Kankal Mata Ji	Taleda
163.	Shri Teja Ji	Taleda
164.	Shri Bala Ji	Taleda
165.	Shri Jameen Jawar	Taleda
166.	Shri Bhajan Ji	Taleda
167.	Shri Charbhuj Ji	Taleda
168.	Shri Laxmi Narayan Ji	Taleda
169.	Shri Bariya ka Dev Ji	Taleda
170.	Shri Panjiri	Taleda
171.	Shri Shree Ji	Taleda
172.	Shri Shree Ji	Taleda
173.	Shri Pitambar Ji	Hindoli
174.	Shri Kalyan Ji	Hindoli
175.	Shri Raghunath Ji	Hindoli
176.	Shri Ganesh Ji	Hindoli
177.	Shri Charbhuj Ji	Hindoli
178.	Shri Kedarnath Ji	Hindoli
179.	Shri Shada Bhat Ji	Hindoli
180.	Shri Badrinath Ji	Hindoli
181.	Shri Laxmi Narayan Ji	Hindoli
182.	Shri Badri Narayan Ji	Hindoli
183.	Shri Laxminath Ji	Hindoli
184.	Shri Charbhuj Ji	Hindoli
185.	Shri Kartik Katha Ji	Hindoli
186.	Shri Shree Ji	Hindoli
187.	Shri Mata Ji	Hindoli
188.	Shri Charbhuj Ji	Hindoli
189.	Shri Thakur Ji	Hindoli
190.	Shri Jan Rai Ji	Hindoli
191.	Shri Laxminath Ji	Hindoli
192.	Shri Charbhuj Ji	Hindoli

S. No.	Temple Name	Block
193.	Shri Laxminath Ji	Hindoli
194.	Shri Narsingh Ji	Hindoli
195.	Shri Rangnath Ji	Hindoli
196.	Shri Rangnath Ji	Hindoli
197.	Shri Charbhuj Ji	Hindoli
198.	Shri Charbhuj Ji	Hindoli
199.	Shri Laxminath Ji	Hindoli
200.	Shri Charbhuj Ji	Hindoli
201.	Shri Rangnath Ji	Hindoli
202.	Shri Sawala Ji	Hindoli
203.	Shri Charbhuj Ji	Hindoli
204.	Shri Bala Ji	Hindoli
205.	Shri Sawal Ji	Hindoli
206.	Shri Ganesh Ji	Hindoli
207.	Shri Raghunath Ji	Hindoli
208.	Shri Bala Ji	Hindoli
209.	Shri Gopal Ji	Hindoli
210.	Shri Jan Rai Ji	Hindoli
211.	Shri Jan Rai Ji	Hindoli
212.	Shri Laxminath Ji	Hindoli
213.	Shri Radha Vallabh Ji	Hindoli
214.	Shri Bala Ji	Hindoli
215.	Shri Bala Ji	Hindoli
216.	Shri Bala Ji	Hindoli
217.	Shri Laxminath Ji	Hindoli
218.	Shri Sawal Ji, Charbhuj Ji	Hindoli
219.	Shri Kansang Ji	Hindoli
220.	Shri Jain Mandir	Hindoli
221.	Shri Bala Gopal Ji	Hindoli
222.	Shri Dabka Ka Mandir	Hindoli
223.	Shri Mateshwariyan Mandir	Hindoli
224.	Shri Bala Ji	Hindoli
225.	Shri Laxminath Ji	Hindoli
226.	Shri Mata Ji	Hindoli
227.	Shri Kumaro ka	Hindoli

S. No.	Temple Name	Block
	Mandir	
228.	Shri Masjid Ji	Hindoli
229.	Shri Masjid Ji	Hindoli
230.	Shri Mandiran Ji	Hindoli
231.	Shri Gopal Lal Ji	Hindoli
232.	Shri Mahadev Ji	Hindoli
233.	Shri Kanti Kuviri Ji	Hindoli
234.	Shri Ganesh Ji	Hindoli
235.	Shri Sada Khal Pujan	Hindoli
236.	Shri Bala Ji	Hindoli
237.	Shri Tididal Ji	Hindoli
238.	Shri Teja Ji Pujan	Hindoli
239.	Shri Mata Ji	Hindoli
240.	Shri Shree Ji	Hindoli
241.	Shri Kartik Puja	Hindoli
242.	Shri Mata Ji Pujan	Hindoli
243.	Shri Ramdev Ji	Hindoli
244.	Shri Tididal Ji	Hindoli
245.	Shri Ghas Bheru Ji	Hindoli
246.	Shri Shree Ji	Hindoli
247.	Shri Kartik Katha Gaon	Hindoli
248.	Shri Mata Ji	Hindoli
249.	Shri Mahadev Ji	Hindoli
250.	Shri Ramdev Ji	Hindoli
251.	Shri Ghas Bheru Ji	Hindoli
252.	Shri Tididal Ji	Hindoli
253.	Shri Badgaon Laxmi Narayan Ji	Hindoli
254.	Shri Mata Ji	Hindoli
255.	Shri Hanuman Ji	Hindoli
256.	Shri Damodar Ji	Hindoli
257.	Shri Khal Brahiya Ji	Hindoli
258.	Shri Shree Ji	Hindoli
259.	Shri Laxminath Ji	Hindoli
260.	Shri Kartik Samasta Utsav	Hindoli

S. No.	Temple Name	Block
261.	Shri Ganesh Ji Mahadev Ji	Hindoli
262.	Shri Danda Chouth	Hindoli
263.	Shri Teja Ji	Hindoli
264.	Shri Gavand Mata Ji	Hindoli
265.	Shri Brahma Ji Mandir	Hindoli
266.	Shri Kankali Mata Ji	Hindoli
267.	Shri Jaleri Bhariy Ji	Hindoli
268.	Shri Navratri Ji	Hindoli
269.	Shri Ghas Bheru Ji	Hindoli
270.	Shri Dhaja Dand Ji	Hindoli
271.	Shri Mahadev Ji	Hindoli
272.	Shri Holi Pujan	Hindoli
273.	Shri Rangnath Ji	Hindoli
274.	Shri Dev Ji	Hindoli
275.	Shri Baldev Ji	Nainwa
276.	Shri Jain Mandir	Nainwa
277.	Shri Mansha Puran Ji	Nainwa
278.	Shri Charbhuj Ji	Nainwa
279.	Shri Kheda Dev Ji	Nainwa
280.	Shri Rangnath Ji	Nainwa
281.	Shri Sawla Ji	Nainwa
282.	Shri Raghunath Ji	Nainwa
283.	Shri Raghunath Ji	Nainwa
284.	Shri Laxminath Ji	Nainwa
285.	Shri Baldev Ji	Nainwa
286.	Shri Charbhuj Ji	Nainwa
287.	Shri Charbhuj Ji	Nainwa
288.	Shri Charbhuj Ji	Nainwa
289.	Shri Charbhuj Ji	Nainwa
290.	Shri Jain Mandir Ji	Nainwa
291.	Shri Ganesh Ji	Nainwa
292.	Shri Mata Ji	Nainwa
293.	Shri Ghas Bheru Ji	Nainwa
294.	Shri Raghunath Ji	Nainwa

S. No.	Temple Name	Block
295.	Shri Raghunath Ji	Nainwa
296.	Shri Laxminath Ji	Nainwa
297.	Shri Jan Rai Ji	Nainwa
298.	Shri Ganesh Ji	Nainwa
299.	Shri Hanuman Ji	Nainwa
300.	Shri Mahadev Ji	Nainwa
301.	Shri Kheda Dev Ji	Nainwa
302.	Shri Mata Ji	Nainwa
303.	Shri Chota Mata Ji	Nainwa
304.	Shri Kankali Mata Ji	Nainwa
305.	Shri Kawal Ji Jal Lane ke	Nainwa
306.	Shri Jain Mandir Jal lane Ke	Nainwa
307.	Shri Khel Bharai Jal lane Ke	Nainwa
308.	Shri Murlidhar Ji Jal lane Ke	Nainwa
309.	Shri Thakur Ji	Nainwa
310.	Shri Rangnath Ji	Nainwa
311.	Shri Ashapur Ji Samadhi	Nainwa
312.	Shri Kesho Rai Ji Samadhi	Nainwa
313.	Shri Gopal Lal Ji Samadhi	Nainwa
314.	Shri Gopinath Ji Samadhi	Nainwa
315.	Shri Kawal Ji Khel Bharai	Nainwa
316.	Shri Madan Mohan Ji	Nainwa
317.	Shri Laxminath Ji	Nainwa
318.	Shri Kankali Mata Ji	Nainwa
319.	Shri Kheda Dev Ji	Nainwa
320.	Shri Khel Bharai	Nainwa
321.	Shri Mathuranath Ji	Nainwa
322.	Shri Aashapura Ji	Nainwa

S. No.	Temple Name	Block
323.	Shri Chaturbhuj Rai Ji	Nainwa
324.	Shri Kalyan Rai Ji	Nainwa
325.	Shri Keshav Rai Ji	Nainwa
326.	Shri Laxminath Ji	Nainwa
327.	Shri Chaturbhuj Rai Ji	Nainwa
328.	Shri Jain Mandir	Nainwa
329.	Shri Sitaram Ji	Nainwa
330.	Shri Salagram Ji	Nainwa
331.	Shri Ramlal Ji	Nainwa
332.	Shri Raghunath Ji	Nainwa
333.	Shri Neelkanth Ji Mahadev Ji	Nainwa
334.	Shri Ramchandra Ji	Nainwa
335.	Shri Jan Rai Ji	Nainwa
336.	Shri Jagannath Ji	Nainwa
337.	Shri Laxmi Narayan Ji	Nainwa
338.	Shri Narsingh Ji	Nainwa
339.	Shri Jan Rai Ji	Nainwa
340.	Shri Rangnath Ji	Nainwa
341.	Shri Sawla Ji	Nainwa
342.	Shri Murlidhar Ji	Nainwa
343.	Shri Bansidhar Ji	Nainwa
344.	Shri Bala Ji	Nainwa
345.	Shri Laxmi Narayan Ji	Nainwa
346.	Shri Chaturbhuj Ji	Nainwa
347.	Shri Sawla Ji	Nainwa
348.	Shri Bal Mukund Ji	Nainwa
349.	Shri Chaturbhuj Ji	Nainwa
350.	Shri Rangnath Ji	Nainwa
351.	Shri Ganesh Ji	Nainwa
352.	Shri Hanuman Ji	Nainwa
353.	Shri Laxmi Narayan Ji	Nainwa
354.	Shri Raghunath Ji	Nainwa

S. No.	Temple Name	Block
	ki Katha	
355.	Shri Vijaya Dashmi Bhawal	Nainwa
356.	Shri Diwali Pujan Ji	Nainwa
357.	Shri Mata Sita Pujan	Nainwa
358.	Shri Shree Ji Mai Sath ke Pujan Rajlabta	Nainwa
359.	Shri Pitambar Ji	Nainwa
360.	Shri Rangnath Ji	Nainwa
361.	Shri Sitaram Ji	Nainwa
362.	Shri Charbhuj Ji	Nainwa
363.	Shri Laxminath Ji	Nainwa
364.	Shri Murli Manohar Ji	Nainwa
365.	Shri Khel Bharai	Nainwa
366.	Shri Kesho Rai Ji	Nainwa
367.	Shri Narsingh Ji	Nainwa
368.	Shri Kheda Dev Ji	Nainwa
369.	Shri Jagannath Ji Lalganj	Nainwa
370.	Shri Laxmi Narayan Ji	Nainwa
371.	Shri Sawla Ji	Nainwa
372.	Shri Salagram Ji	Nainwa
373.	Shri Rangnath Ji	Nainwa
374.	Shri Jain Mandir	Nainwa
375.	Shri Narsingh Ji	Nainwa
376.	Shri Kheda Dev Ji	Nainwa
377.	Shri Baldev Ji Ged	Nainwa
378.	Shri Laxmi Narayan Ji	Nainwa
379.	Shri Brijrai Ji	Nainwa
380.	Shri Rangnath Ji	Nainwa
381.	Shri Baldev Ji	Nainwa
382.	Shri Laxmi Narayan Ji	Nainwa
383.	Shri Bihari Ji	Nainwa

S. No.	Temple Name	Block
384.	Shri Khandeshwar Ji	Nainwa
385.	Shri Aadinath Ji	Nainwa
386.	Shri Nashiya Ji	Nainwa
387.	Shri Chaturbhuj Ji	Nainwa
388.	Shri Raghunath Ji	Nainwa
389.	Shri Chaturbhuj Ji	Nainwa
390.	Shri Jan Rai Ji	Nainwa
391.	Shri Sawla Ji	Nainwa
392.	Shri Khel Bharai	Nainwa
393.	Shri Laxminath Ji	Nainwa
394.	Shri Ganesh Ji	Nainwa
395.	Shri Laxminath Ji	Nainwa
396.	Shri Jan Rai Ji	Nainwa
397.	Shri Sitaram Ji	Nainwa
398.	Shri Jan Rai Ji	Nainwa
399.	Shri Jain Mandir	Nainwa
400.	Shri Rangnath Ji	Nainwa
401.	Shri Jan Rai Ji	Nainwa
402.	Shri Kalyan Rai Ji	Nainwa
403.	Shri Shree Ji	Nainwa
404.	Shri Rakhi Diwali Kirtan Katha	Nainwa
405.	Shri Bala Ji	Nainwa
406.	Shri Charbhuj Ji	Nainwa
407.	Shri Rangnath Ji	Nainwa
408.	Shri Rangnath Ji	Nainwa
409.	Shri Teja Ji	Nainwa
410.	Shri Ganesh Ji	Nainwa
411.	Shri Hanuman Ji	Nainwa
412.	Shri Ramnath Mahadev Ji	Nainwa
413.	Shri Shree Ji Diwali	Patan
414.	Shri Shree Ji	Patan
415.	Shri Shree Ji	Patan
416.	Shri Shree Ji	Patan
417.	Shri Shree Ji	Patan
418.	Shri Shree Ji	Patan
419.	Shri Mahadev Ji	Patan

S. No.	Temple Name	Block
420.	Shri Shree Ji	Patan
421.	Shri Shree Ji	Patan
422.	Shri Shree Ji	Patan
423.	Shri Shree Ji	Patan
424.	Shri Shree Ji	Patan
425.	Shri Shree Ji	Patan
426.	Shri Kartik Puja	Patan
427.	Shri Mahadev Ji	Patan
428.	Shri Kalka Mata Ji	Patan
429.	Shri Ganesh Ji	Patan
430.	Shri Shree Ji	Patan
431.	Shri Baldevpura Shree Ji	Patan
432.	Shri Shree Ji	Patan
433.	Shri Sukhrai Ji Jali Ji Ka	Patan
434.	Shri Shree Ji	Patan
435.	Shri Charbhuj Ji	Patan
436.	Shri Parsad Bhet	Patan
437.	Shri Ganesh Ji	Patan
438.	Shri Jan Rai Ji	Patan
439.	Shri Teja Ji	Patan
440.	Shri Vishveshwarnath Ji	Patan
441.	Shri Mahadev Ji Katha	Patan
442.	Shri Mata Ji	Patan
443.	Shri Hanuman Ji	Patan
444.	Shri Kheda Dev Ji	Patan
445.	Shri Goga Pujan	Patan
446.	Shri Dhudhala Ji ki Bhet	Patan
447.	Shri Laxminath Ji	Patan
448.	Shri Kheda Dev Ji	Patan
449.	Shri Mata Ji	Patan
450.	Shri Ghas Bheru Ji	Patan
451.	Shri Ganesh Ji	Patan
452.	Shri Dhudhala Ji ki Kube	Patan

S. No.	Temple Name	Block
453.	Shri Kalyan Rai Ji	Patan
454.	Shri Shree Ji	Patan
455.	Shri Ganesh Ji	Patan
456.	Shri Khel Bharai	Patan
457.	Shri Rangnath Ji	Patan
458.	Shri Thakur Ji	Patan
459.	Shri Ganesh Ji	Patan
460.	Shri Laxmi Narayan Ji	Patan
461.	Shri Jain Mandir	Patan
462.	Shri Shankar Mahadev Ji	Patan
463.	Shri Vijshan Mata Ji	Patan
464.	Shri Ganesh Ji	Patan
465.	Shri Vitthalnath Ji , Vijaynath Ji	Patan
466.	Shri Mohan Lal Ji	Patan
467.	Shri Hingal Mata Ji	Patan
468.	Shri Jain Mandir	Patan
469.	Shri Keshav Rai Ji	Patan
470.	Shri Laxmi Narayan Ji, Vijaynath Ji	Patan
471.	Shri Neelkanth Ji Mahadev	Patan
472.	Shri Murlidhar Ji	Patan
473.	Shri Shree Ji	Patan
474.	Shri Charbhuj Ji	Patan
475.	Shri Raghunath Ji	Patan
476.	Shri Laxminath Ji	Patan
477.	Shri Shree Ji	Patan
478.	Shri Shree Ji	Patan
479.	Shri Jan Rai Ji	Patan
480.	Shri Baldev Ji	Patan
481.	Shri Rai Ji	Patan
482.	Shri Rang Ji	Patan
483.	Shri Baldev Ji	Patan
484.	Shri Mahadev Ji	Patan

S. No.	Temple Name	Block
485.	Shri Murlidhar Ji	Patan
486.	Shri Ganesh Ji	Patan
487.	Shri Raghunath Ji	Patan
488.	Shri Charbhuj Ji	Patan
489.	Shri Laxminath Ji	Patan
490.	Shri Vacheshwar Ji	Patan
491.	Shri Hanuman Ji	Patan
492.	Shri Pitambar Ji	Patan
493.	Shri Lal Bihari Ji	Patan
494.	Shri Ganesh Ji	Patan
495.	Shri Kalyan Rai Ji	Patan
496.	Shri Sundar Ganesh Ji	Patan
497.	Shri Ganesh Ji	Patan
498.	Shri Neelkanth Ji Mahadev Ji	Patan
499.	Shri Batuk Bheru Ji	Patan
500.	Shri Narsingh Ji	Patan
501.	Shri Bala Ji	Patan
502.	Shri Bheru Ji	Patan
503.	Shri Karkara Bheru Ji	Patan
504.	Shri Ganesh Ji	Patan
505.	Shri Bala Ji	Patan
506.	Shri Raghunath Ji	Patan
507.	Shri Basak ka Ganesh	Patan
508.	Shri Mahadev Ji	Patan
509.	Shri Raghunath Ji	Patan
510.	Shri Raghunath Ji	Patan
511.	Shri Hanuman Ji	Patan
512.	Shri Shesh Ji	Patan
513.	Shri Manasvach Ganesh Ji	Patan
514.	Shri Ganesh Ji	Patan
515.	Shri Mahadev Ji	Patan
516.	Shri Bala Ji	Patan
517.	Shri Mahadev Ji	Patan
518.	Shri Thakur Ji	Patan

S. No.	Temple Name	Block
519.	Shri Vijaynath Ji, Mahadev Ji	Patan
520.	Shri Dhiyan Ji	Patan
521.	Shri Laxmirai Ji	Patan
522.	Shri Vrindavan Ji	Patan
523.	Shri Thakur Ji	Patan
524.	Shri Rangnath Ji	Patan
525.	Shri Madan Mohan Ji	Patan
526.	Shri Lal Bheru Ji	Patan
527.	Shri Ramchandra Ji Sawal Ka	Patan
528.	Shri Narsingh Ji Sawal Ka	Patan
529.	Shri Varah Ji Sawal Ka	Patan
530.	Shri Ramchandra Ji	Patan
531.	Shri Sitaram Ji	Patan
532.	Shri Hanuman Ji	Patan
533.	Shri Radha Mudar Ji	Patan
534.	Shri Ramchandra Ji	Patan
535.	Shri Bala Ji	Patan
536.	Shri Gori Shankar Mahadev Ji	Patan
537.	Shri Raghunath Ji	Patan
538.	Shri Narsingh Ji	Patan
539.	Shri Ganesh Ji Brahmachari Ji	Patan
540.	Shri Mahadev Ji	Patan
541.	Shri Chawand Mata Ji	Patan
542.	Shri Bala Ji	Patan
543.	Shri Ganesh Ji	Patan
544.	Shri Bheru Ji	Patan
545.	Shri Laxminath Ji	Patan

S. No.	Temple Name	Block
546.	Shri Manshwarnath Mahadev Ji	Patan
547.	Shri Aadinath Ji	Patan
548.	Shri Chawand Mata Ji	Patan
549.	Shri Bheru Ji	Patan
550.	Shri Rameshwar Ji Mahadev Ji	Patan
551.	Shri Savet Veehan Ji Mahadev Ji	Patan
552.	Shri Ram Kishan Samadhi	Patan
553.	Shri Raj Rajeshwar Ji Mahadev Ji	Patan
554.	Shri Bhuteshwar Ji Mahadev Ji	Patan
555.	Shri Shukleshwar Mahadev Ji	Patan
556.	Shri Gordhan Nath Ji	Patan
557.	Shri Jambu Deep Jalori Bharai	Patan
558.	Shri Bala Ji Gadi ka	Patan
559.	Shri Masjid Idgah	Patan
560.	Shri Makka Sharif	Patan
561.	Shri Ful Pari Ji	Patan
562.	Shri Thakur Ji, Keshavdas Ji	Patan
563.	Shri Ganesh Ji	Patan

Non-religious Sites¹¹

- **Sukh Mahal**



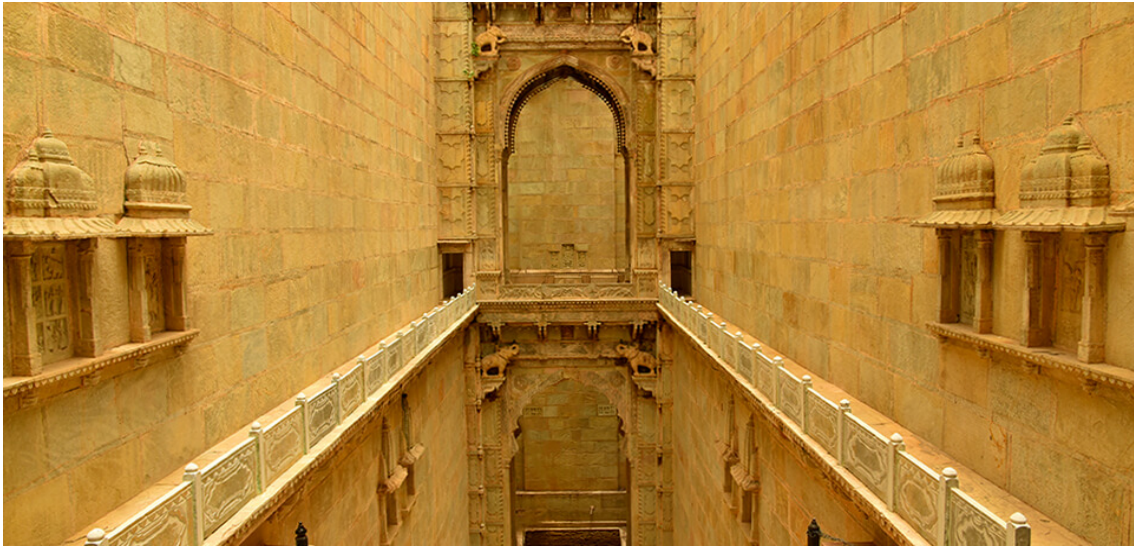
Sukh Mahal, a small, two-storied palace was a summer retreat of past rulers. Today, it is quite famous for being the place where Kipling wrote 'Kim'. Many credit the palace as a having played muse to the renowned novel. In fact, part of a movie based on the novel was even shot here.

- **Kshar Bag**



Located near the Chhatra Vilas Garden, Kshar Bag, sometimes known as Saar Bagh, houses the memorial cenotaphs of the royal family of the Bundi state. It is located on the Shikar Burgh Jait Sagar Road.

- **Raniji ki Baori**



Raniji ki Baori, also known as 'Queen's Stepwell', is a famous stepwell built in 1699 by Rani Nathavati Ji, the younger queen of the ruling king Rao Raja Anirudh Singh of Bundi. This multi-storied stepwell displays excellent carvings of Gajraj with his trunk turned inwards, giving the impression of having drunk from the baori on its pillars. Its high arched gate gives it an inviting appearance.

- **Dabhai Kund**



Shaped like an inverted pyramid, the Dabhai Kund, also known as Jail Kund, is the largest of its kind in Bundi. The fantastic carvings on the steps that lead to the water alone are reason enough to warrant a visit.

- **Nagar Sagar Kund**



Located outside the Chauhan Gate, the Nagar Sagar Kund, a set of twin step wells, was constructed to provide water during times of famine.

- **Taragarh Fort**



Built in 1345, Taragarh is one of the most impressive structures in Bundi. While it may be a bit ramshackle and strewn with overgrown vegetation, the palace grounds are a great place for a leisurely stroll. With its curved roofs topping pavilions, excess of temple columns and elephant and lotus motifs, the palace is a tribute to Rajput style.

- **84 Pillared Cenotaph**



As the name suggests, the 84 Pillared Cenotaph is a structure supported by 84 columns. Commissioned by Rao Anirudh, the Maharaja of Bundi, this cenotaph is a tribute to his beloved wet nurse, Deva, who he loved dearly. A popular tourist attraction, this impressive structure is decorated with carvings of deer, elephants and apsaras.

- **Lake Jait Sagar**



Located close to the Taragarh Fort, this picturesque lake is surrounded by hills and covered with pretty lotus flowers that bloom during winter and monsoon.

- **Lake Nawal Sagar**



Nawal Sagar Lake is an artificial lake that is a major tourist attraction and can even be seen from the Taragarh Fort. There is a half-submerged temple dedicated to Lord Varun Dev in its centre. What makes the lake unique is that one can see the reflection of nearby palaces and forts in its waters.

Archaeological Monuments¹²

- **Bundi Wall Paintings**



These famous paintings belonging to the Bundi school lie in the baradari situated close to the Chota-jiv-Rakha, in the Taragarh fort, in a single row of cells with continuous pillared verandah in front. The fresco-paintings depict scenes of elephant fight, horse and elephant riders, love scenes and scenes of dance and drink.

- **Keshavraipatan Mound**

The early names of the place were Asrananagara, Asramapakana and Pattana. The mound is large in size measuring about 300 x 200 m and has yielded red wares, dating from the early historical period.

- **Nainwa**



The small ancient mound situated 1.5 km to the north of the Nainwa Bus Stand, has been totally brought under cultivation and lies near the village Chhoti Padav. It yielded red wares. The remains date from the early historical period.

Human Resources

According to the 2011 Census, 5,26,091 persons in the district are workers. This constitutes 47.36 of the total population. Of these, 3,61,070 are main workers and 1,65,021 are marginal workers.

There are 11,969 migrant labourers in Bundi district.

Category	Number
Electronics, Electrical and Computer	76
Industry / Business	712
Consultancy / Agent	19
Medical related	19
Tour, Travels Transport	59
Washing and cleaning	2
Religious	3
Migrant labourer	17
Building and construction	2952
Food and vegetable	25
Entertainment and sports related	4

Category	Number
Marketing, Advertising and Printing	18
Repair / repair	23
Weddings & Events	21
Education and learning	76
Safety and Security	15
Other	309
Total	4350

Part B – Opportunity and Potential Mapping¹³

Agro Based industries

In the district the main agriculture produce are Rice, Jowar, Maize, Wheat, Gram, Chillies, Sugarcane, Rape & Mustard Coriander and Soyabeen.

Oil Seed Based Industries

The production of mustard was 108387 tonnes and soyabeen was 69509 tonnes in 2016- 2017 at present there some more units registered in the district and 67 Oil – ghanies. Even then some more units can be set up in the district at Bundi, Deogarh. The soyabeen produced in the district is mainly supplied to the Rajfed soyabeen project of Kota District. There large scale unit VIZ M/s Ruchi Soya Ind Ltd. M/s AOL pvt. Ltd., M/s Adani Wilmar Ltd. is functioning in the district.

References

¹<https://www.rajras.in/rajasthan/districts/bundi/>

² District Census Handbook 2011

³http://www.agriculture.rajasthan.gov.in/content/dam/agriculture/Agriculture%20Department/agriculturalstatistics/rajasthan_agriculture_statistics_at_a_glance_2018-19.pdf Page no 2

⁴<http://www.agriculture.rajasthan.gov.in/content/dam/agriculture/Agriculture%20Department/agriculturalstatistics/18-19.pdf>

⁵http://www.agriculture.rajasthan.gov.in/content/dam/agriculture/Agriculture%20Department/agriculturalstatistics/rajasthan_agriculture_statistics_at_a_glance_2018-19.pdf . Page no 79 onwards

⁶<https://fsi.nic.in/isfr19/vol2/isfr-2019-vol-ii-rajasthan.pdf> and District Census Handbook 2011

⁷http://industries.rajasthan.gov.in/content/dam/industries/CI/pdf/2018-19/IPS_BUNDI_2018-19.pdf

⁸http://industries.rajasthan.gov.in/content/industries/doi/More/RelatedInformation/IndustrialPotentialSurvey_IPS.html#

⁹http://industries.rajasthan.gov.in/content/industries/doi/More/RelatedInformation/IndustrialPotentialSurvey_IPS.html#

¹⁰http://industries.rajasthan.gov.in/content/industries/doi/More/RelatedInformation/IndustrialPotentialSurvey_IPS.html#

¹¹<http://www.tourism.rajasthan.gov.in/tourist-destinations.html>

¹²<http://asijaipurcircle.nic.in/monements.html>

¹³http://industries.rajasthan.gov.in/content/industries/doi/More/RelatedInformation/IndustrialPotentialSurvey_IPS.html#